



**ATIS WORLDWIDE  
Limited**

Office n°5 – 10th floor  
Goldcrest  
Executive Tower  
P.O. Box 9867, Dubai –  
U.A.E

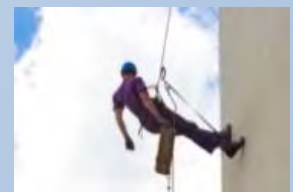
Phone: +351 916 399 499  
+971 4 422 1345

[nsilva@atisworldwide.com](mailto:nsilva@atisworldwide.com)

***Inspection, consulting and Staffing  
worldwide***

# ATISWORLDWIDE LTD

**ATIS WORLDWIDE** was created in 2006 as an answer to the need of specialized technicians and support services in the competitive market of Oil & Gas. The companies that trust **ATIS WORLDWIDE** are offshore and onshore exploration and production companies, refineries, power generation companies, engineering and construction companies. To support its development and consolidate its base.



# Our Values

- **Audacity** You need to be able to count on dare partners, whose entities have a short decision circuit, to bring you an answer adapted to the rapid evolution of the market, because the quality to cultivate to innovate is daring.
- **Technicality** For several years of experience in various fields of aeronautics, energy, industry and construction, ATIS has been aware of the constraints and challenges of the various activity sectors such as production, operation, maintenance and security. This expertise allows ATIS to provide you with an answer at once, from professional to professional that you are and personalized to your environment, your constraints and your challenges.
- **Intelligence** Knowing your markets leads to new solutions. Efficiency and effectiveness are always necessary to work "smarter".
- **Solidarity** Solidarity cannot be decreed, it is built on a daily basis. Internally and externally, it is lived. It is certainly for this reason that those who make up the company develop a strong sense of belonging through the enhancement of women and men and their skills which brings this capacity to everyone to surpass themselves and therefore to be more inclined to naturally turn to others.
- **The women and men of ATIS** Polycultural, rich in their differences, with professional experiences in complementary sectors of activity: these assets offer our staff the necessary flexibility essential to the adaptability required by our interventions in the preparation of inspection and control programs for installations industrial in SERVICE or in STOP.



# QUALITY HEALTH, SAFETY & ENVIRONMENT (QHSE)

We ensure efficient implementation of a health and safety management system. We are committed to our objectives for the health, safety and environment to motivate all those in the system as to how they can contribute to an improved health and

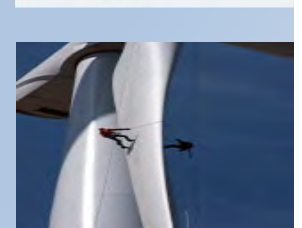
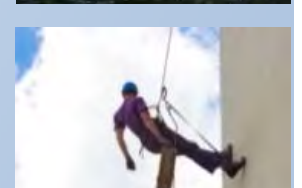
safety performance; and defaulters are held to accountable.

The purpose of our Quality management Plan is to organize the implementation of a Quality control System for the works performed by **ATIS WORLDWIDE** Limited.

According to the company's Quality Assurance requirements, this plan will provide: Systematic planning for quality activities in all phases of any project.

Proper organization and staffing of the quality assurance activities.  
Documentation to meet regulatory, venture and project Quality requirements.

Internal quality and audit program.





# AWLTD Solutions

**TECHNICAL  
ASSISTANCE**

**INSPECTION &  
NDT**



**OTHER  
ACTIVITIES /  
PARTNERSHIPS**

**TRAINING**



# Services

- Technical Support
- Inspection Engineering

**ATIS WORLDWIDE** has a profiles database for more than 50 kind of jobs, and a team of specialized persons to find the appropriate one to suit your needs

**ATIS WORLDWIDE** offers you the efficiency of an asset Integrity program. All tasks related to asset integrity, maintenance and inspection operations are organized to meet your objectives of reliability, profitability and security.

Our Know-How:

- Definition of inspection strategies in accordance with the legislation of the country according to the legislation and customer requirements
- Risk analysis (RBI) of pressure systems, in compliance with API 580 and 581
- Corrosion Control Documents
- Drafting of ranges and procedures
- Development of operational plans
- Preparation of inspection plans
- Preparation of inspection diagrams from the 3D model, and production of a pdf document integrating 3D
- Baseline inspections on site

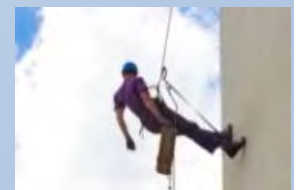
- Works on ropes

**ATIS WORLDWIDE** provides professionals, with two complementary skills, their job skills and those of rope workers.

Where you cannot access in the traditional way, **ATIS WORLDWIDE** provides you with specialists in maintenance, inspection, control and repair work.

Our know-how:

- Non-destructive testing
- Maintenance
- Sandblasting, painting, welding, etc.
- Cleaning



# Services

- Inspection and NDT

**ATIS WORLDWIDE** offers inspection and control solutions by specialized and qualified personnel.

**ATIS WORLDWIDE** can carry out periodic inspections such as operational inspections by following the inspection plans and can also intervene on an ad hoc basis in the event of unforeseen problems by recommending solutions to the operator.

Our know-how:

- Site and factory inspection
- Non-destructive tests, Advanced as well as conventional NDT (ToFD, Ultrasound, Penetrant testing, Magnetoscopy, etc.)
- Destructive tests (in laboratory)
- QA / QC
- Method inspection
- Risk analysis

These missions can be carried out through rope access technicians

- Innovative Inspections

The Drone, is the innovative, economical and responsive solution, allowing you to inspect all your sites, whatever their nature, both in shutdown and in operation. We develop business solutions with our customers to provide you with high quality personalized service.

More than a simple aerial shot, ATIS SA and its partner put their know-how in industrial maintenance at your service to analyze the different shots. You will receive a detailed report. It will allow us to build the necessary action plans.



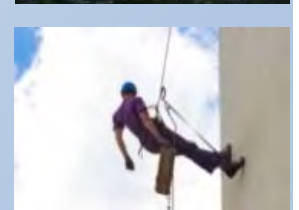
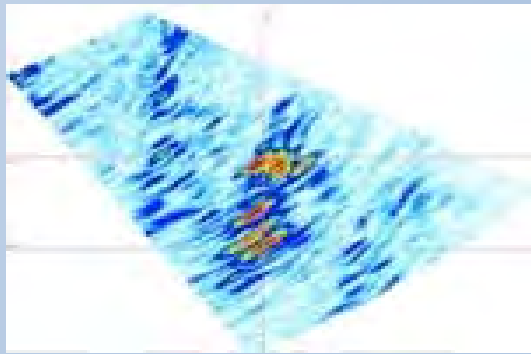
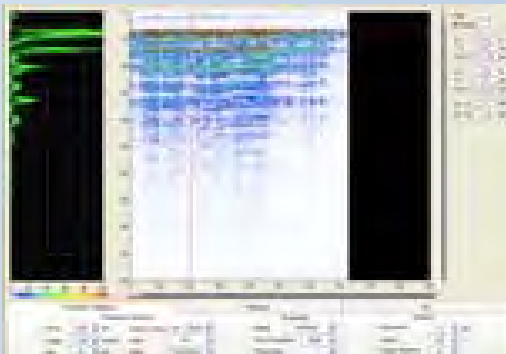
# ADVANCED INSPECTION SERVICES

In an ever changing world where technological advances create opportunities for efficiency and improved performance **ATIS WORLDWIDE** Inspection Services ensures that we continuously provide our clients with the optimum solution for their operational needs.

**ATIS WORLDWIDE** has in-house expertise with qualified and certified inspection teams led by international experts in the following advanced inspection techniques amongst other.

- Phased Array
- Time of Flight Diffraction (ToFD)
- Eddy Current and PSEC
- Corrosion Under Insulation (CUI)
- Failure Investigation
- Corrosion Under Support (CUS)
- Infrared Thermography
- Magnetic Flux Leakage (MFL)
- Remote Visual Inspection
- Super IRIS Tube Inspection
- Long Range UT
- Furnace Tube Inspection (Radiation and Convection)
- Boiler Water Wall Tube Inspection
- C-Scan
- Phonon diagnostic technique
- Acoustic Emission

With an innovative approach and can do attitude we can tailor solutions for the most complex of needs

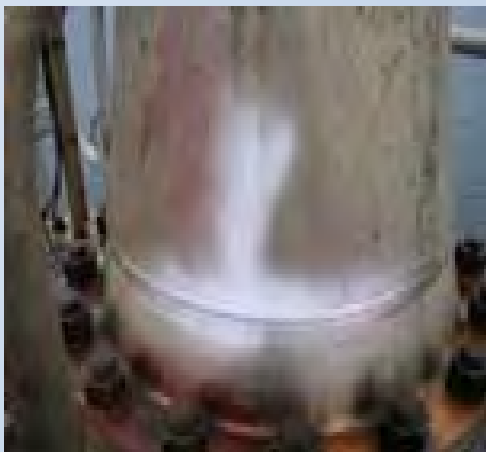




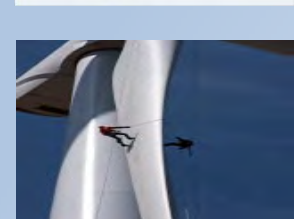
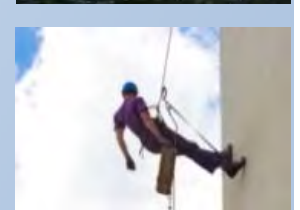
# CONVENTIONAL NDT

Despite technological advances in inspection techniques **ATIS WORLDWIDE** understand that standard solutions to inspection needs can sometimes provide the best outcome. With a focus on quality, efficiency and the optimum result we maintain the capability to deliver a broad range of conventional inspection techniques.

- Ultrasonic Testing
- Eddy Current Surface Testing
- Radiographic Testing
- Magnetic Particle Testing
- Positive Material Identification



- Helium Leak Detection
- Liquid Penetrant Testing
- ACFM



# API BASED INSPECTIONS

**ATIS WORLDWIDE** Inspection Services is perfectly poised to provide qualified and experienced inspectors to deliver a broad range of API inspection.

With a primary focus on API 653 (Tank Inspection), API 570 (Piping Inspection) and API 510 (Pressure Vessel Inspection) we offer packages that provide a complete API inspection solution for bulk storage terminals, refineries, petrochemical facilities and offshore platforms.

API reference standards help your organization comply with regulatory insurance and industry requirements and our inspection teams provide a proactive approach to compliance whilst supporting your plant during operations and turnaround based inspection programs.



# ROPE ACCESS

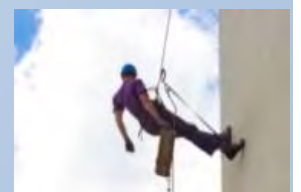
The aim of our Rope Access division is to provide efficient and accurate inspections in the most challenging working environments through certified multi-disciplined inspection professionals.

With a large number of IRATA qualified personnel and an in house IRATA approved training and service facility we are able to control the quality of our inspection personnel and our clients can have absolute confidence in the operational safety of our teams and integrity of the final inspection results.

**ATIS WORLDWIDE** Inspection Services has certified repair, maintenance and inspectors who are Rope Access certified. We are perfectly positioned to offer specific Inspection and Maintenance programs to obtain large cost savings and efficiency by implementing unique improvement plans, inspections and repairs to high standards.

Through the use of multi skilled Rope Access technicians scaffolding can be eliminated. Saving on storage areas, bed space and long term rental costs. Combining repair with maintenance and inspection work (welding, painting, sandblasting, repairs, replacements, etc.) we can offer savings through more effective use of our available resources.

The versatile experience of our organization makes us a one stop solution for all your Repair, Maintenance and Inspection needs.





# PIPELINE SERVICES

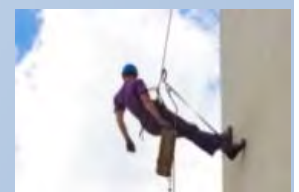
**ATIS WORLDWIDE** offers complete pipeline inspection and integrity solutions delivered by our API qualified inspection teams with extensive experience of pipeline corrosion systems. From Intelligent In line Inspection through to Risk Based Inspection regimes and Fitness for Service evaluations we have the technology, skills and experience to deliver a complete pipeline integrity solution to our clients.

**ATIS WORLDWIDE** understand that your pipeline is one of your most valuable assets and that close working relationships and collaboration is the key to building trust and ensuring the successful delivery of asset integrity services.

Inspection technology, experience, precision and service reliability are all key attributes that **ATIS WORLDWIDE** brings to every project to ensure your pipeline flows at maximum efficiency and that integrity threats are identified quickly and accurately.

**ATIS WORLDWIDE** experience has a proven track record and capability to provide complete Pipeline Integrity solutions:

- Pipeline Cleaning
- Fitness For Service
- Pipeline Displacement
- Dewatering
- Hydrostatic Test
- Nitrogen Drying
- Pipeline Gauging
- Ultrasonic (UT) Intelligent Inline Inspection
- Magnetic Flux Leakage (MFL) Intelligent Inline Inspection
- Remote Field Testing (RFT) Intelligent Inline Inspection
- Caliper/Geometry Intelligent Inline Inspection
- XYZ / IMU / Pipeline Geometrical Mapping Intelligent Inline Inspection



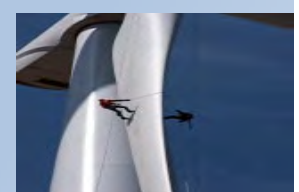


# INLINE INSPECTION

ATIS WORLDWIDE has developed Intelligent Inline Inspection Tools that provide highly accurate results with simple to read and rapidly generated reports. Our Intelligent Inline Inspection tools are capable of acquiring up to 4,000 measurements per second and are designed for simple and cost effective mobilization and operation.

Our Bi-Directional lightweight III tools and extensive engineering capabilities allow us to specialize in inspecting "unpiggable" pipelines and successfully inspected pipelines with no launching and receiving facilities, unbarred tees, mieter bends and other configurations commonly deemed "unpiggable".

ATIS WORLDWIDE 's tools are capable of inspecting all pipelines (subsea, underground or above ground) including carbon steel, austenitic steel, concrete lined, or HDPE lined..

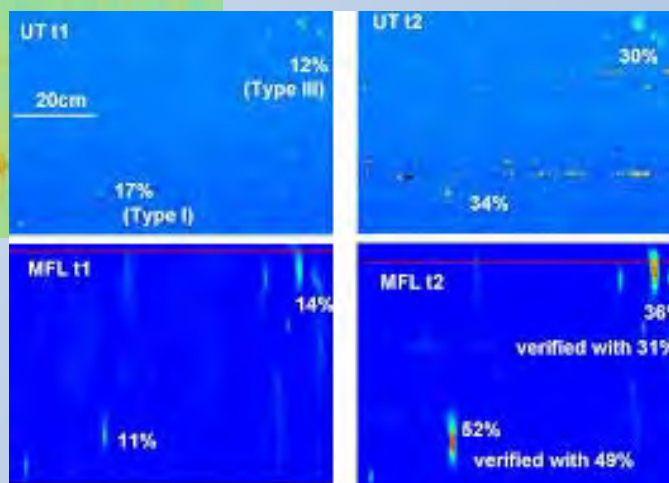
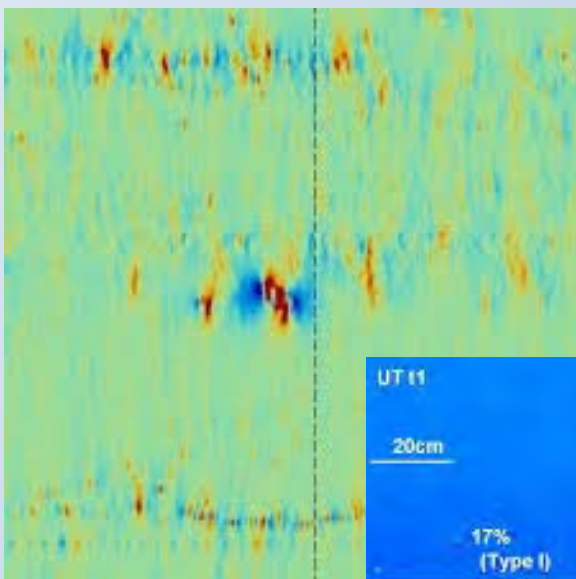


# DATA ANALYSIS

Understanding the condition and remaining life of your pipeline is essential in planning maintenance schedules, minimizing costs where accurate data acquisition and analysis is critical.

With up to 4,000 readings per second collected by our UT Intelligent InLine Tool, the highly accurate data compressed by our software presented an easy to understand "traffic light" format where green is good, amber is medium, and red is a severe defect. All data and results are immediately shared transparently and openly with our clients.

**ATIS WORLDWIDE** data analysis and reporting system helps clients to optimize scheduled maintenance, inspection planning, increase asset reliability and integrity across its pipeline operations



# REFERENCES

